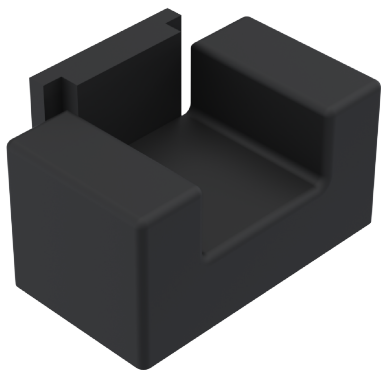


CONJUNTO CONEXÃO MARCO CAMARÃO SIERRA NYL PRT C/2PCS



CARACTERÍSTICAS

| CODIFICAÇÃO | | | |
|-------------|---------|--------------------|---------------------|
| COR | CÓDIGO | CATÁLOGO | SISTEMISTA |
| PRT | 9303173 | CONMARCAMSIENYPRT2 | OCOS-MAGINF-001-PTO |

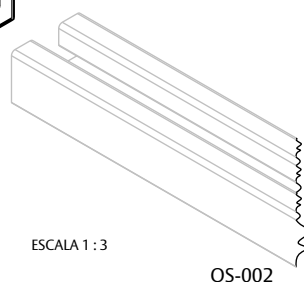
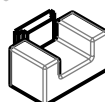
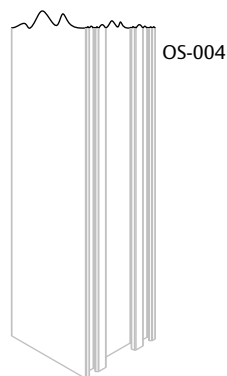
OBSERVAÇÕES

- O CONJUNTO CONTEMPLA 2 CONEXÕES INFERIORES E 2 CONEXÕES SUPERIORES.

COMPOSIÇÃO/CARACTERÍSTICAS:

- CONEXÃO: POLÍMERO.

APLICAÇÃO

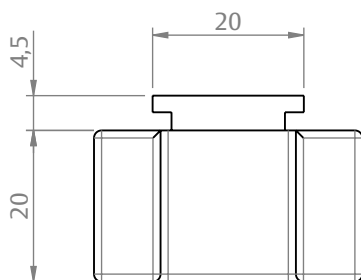
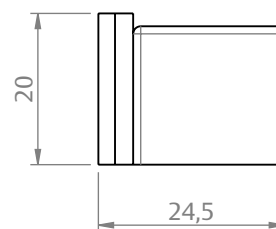
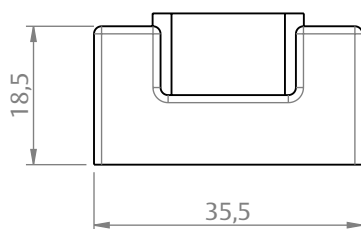


ESCALA 1:3

OS-002

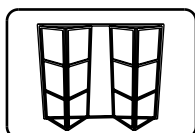
CONEXÃO INFERIOR

DIMENSÕES



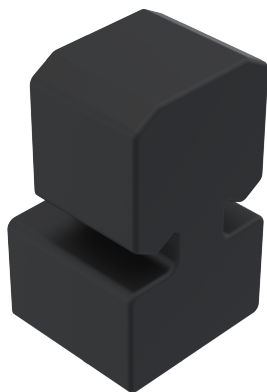
ESCALA 1:1

PORTA CAMARÃO
OLGA SIERRA

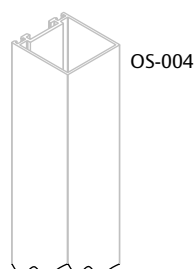
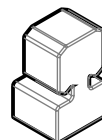
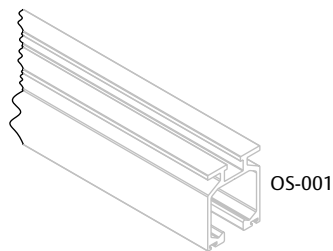


UDINESE
ASSA ABLOY

CONJUNTO CONEXÃO MARCO CAMARÃO SIERRA NYL PRT C/2PCS



APLICAÇÃO



ESCALA 1 : 4

CARACTERÍSTICAS

| CODIFICAÇÃO | | | |
|-------------|---------|--------------------|---------------------|
| COR | CÓDIGO | CATÁLOGO | SISTEMISTA |
| PRT | 9303173 | CONMARCAMSIENYPRT2 | OCOS-MAGSUP-001-PTO |

OBSERVAÇÕES

- O CONJUNTO CONTEMPLA 2 CONEXÕES INFERIORES E 2 CONEXÕES SUPERIORES.

COMPOSIÇÃO/CARACTERÍSTICAS:

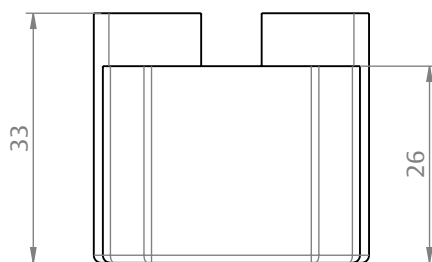
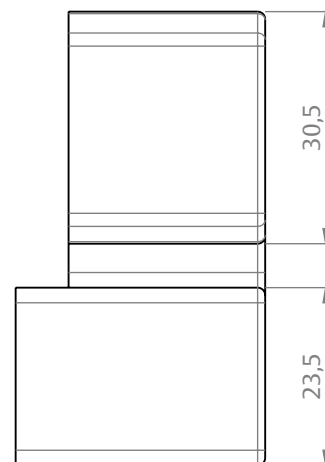
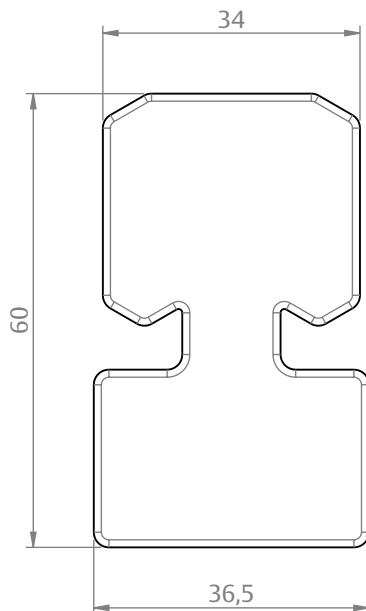
- CONEXÃO: POLÍMERO.

APLICAÇÃO NOS PERFIS:

- OS-001 E OS-009.

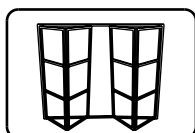
CONEXÃO SUPERIOR

DIMENSÕES



ESCALA 1 : 1

PORTA CAMARÃO
OLGA SIERRA



UDINESE
ASSA ABLOY