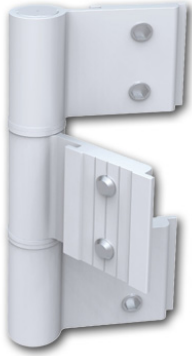
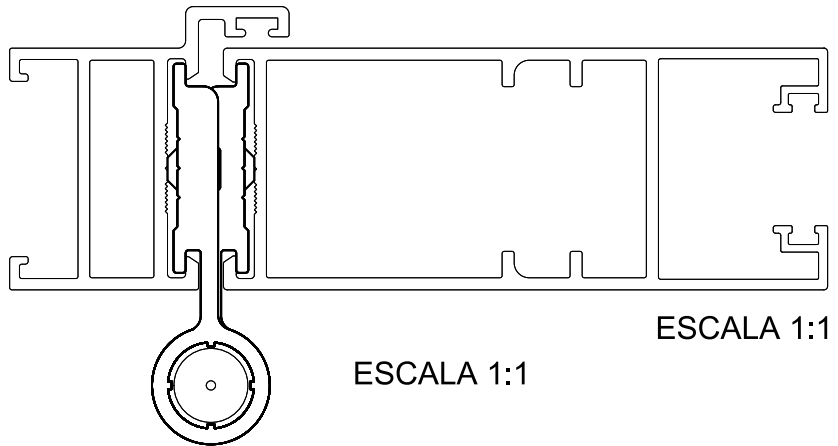


DOBRADIÇA SP-798/7000



APLICAÇÃO



CARACTERÍSTICAS

EMBALAGEM		
COMPONENTES	M. PRIMA	QTDE
ABAS	ALUMÍNIO	9
EIXO	ALUMÍNIO	3
BUCHAS	POLÍMERO	12
PARAFUSO	INOX	18

CODIFICAÇÃO			
COR	CÓDIGO	CATÁLOGO	SISTEMISTA
BCO	9301757	DOBSP7987000BCOE3	DOB-828
BP3	9302241	DOBSP7987000BP3E3	
PRA	9302218	DOBSP7987000PRAE3	
PTF	9302188	DOBSP7987000PTFE3	

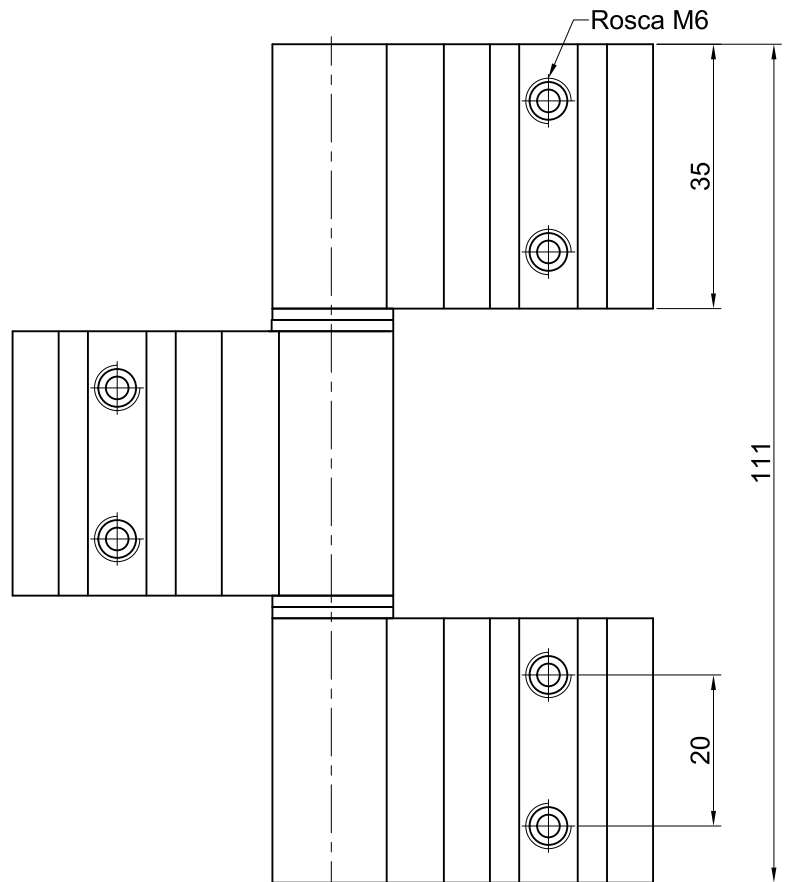
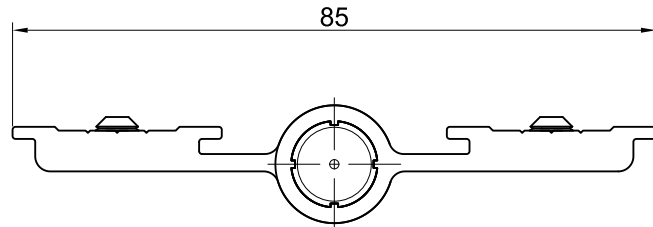
OBSERVAÇÕES

- UTILIZAR 3 DOBRADIÇAS POR FOLHA, CARGA MÁXIMA DA FOLHA 30 kg E DIMENSÕES DE 900 x 2100;

APLICÁVEL NOS PERFIS:

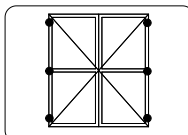
- CHR-035 / CHR-036 / CHR-061

DIMENSÕES



ESCALA 1 : 1

PORTA DE GIRO
CHORMA



UDINESE
ASSA ABLOY