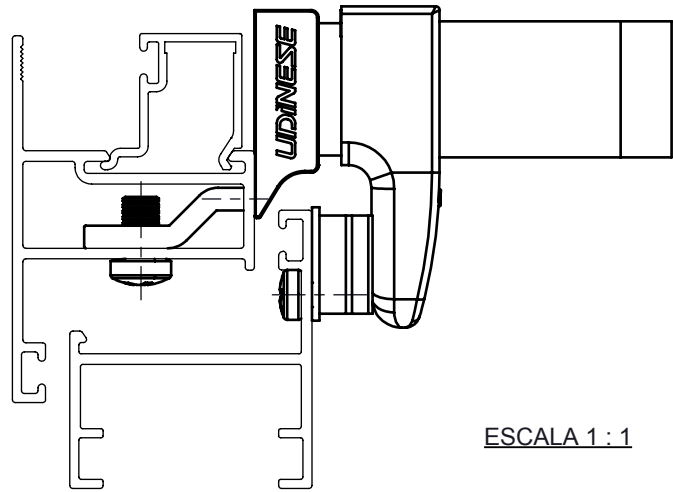


# FECHO MAX-AR 735D INF C/CTF B7 C/CALCO

## APLICAÇÃO



ESCALA 1 : 1

## CARACTERÍSTICAS

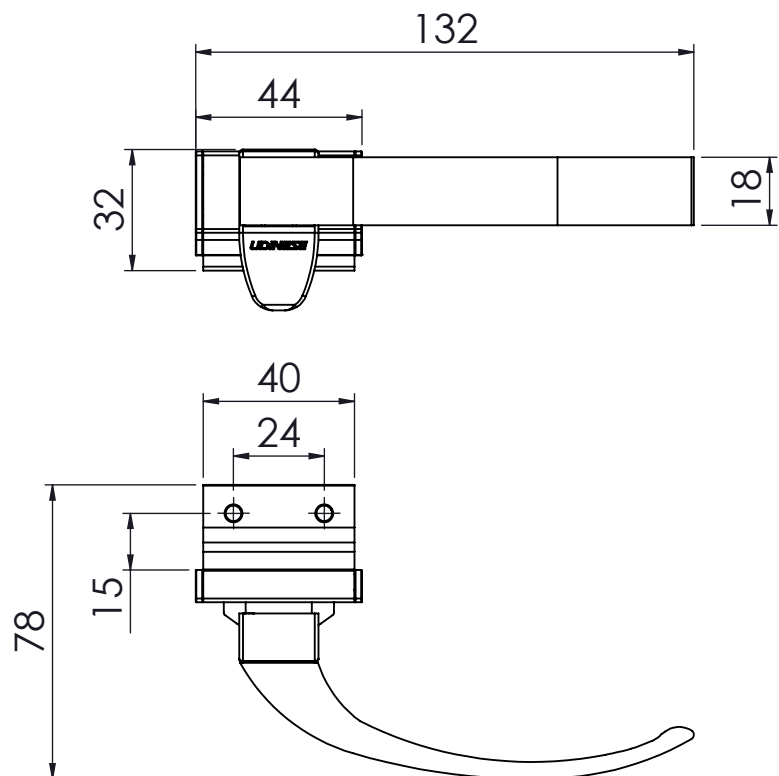
### EMBALAGEM

COMPONENTE	M. PRIMA	QTDE
FECHO	ALUMÍNIO	1
CONTRA FECHO	POLÍMERO	1
PARF W3/16X8 PAN/COMB	INOX	2
PARF A3,5X6,5 PAN/COMB	INOX	2

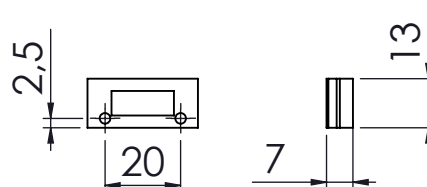
### CODIFICAÇÃO

VER	COR	CÓDIGO	CATÁLOGO
DIR	BCO	9210463	FEC735DINF7CALCOBCO
	PRA	9210464	FEC735DINF7CALCOPRA
	PTF	9210465	FEC735DINF7CALCOPTF
ESQ	BCO	9210466	FEC735EINF7CALCOBCO
	PRA	9210467	FEC735EINF7CALCOPRA
	PTF	9210468	FEC735EINF7CALCOPTF

## DIMENSÕES

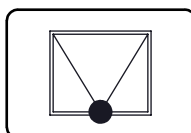


ESCALA 1 : 2



ESCALA 1 : 2

MAXIM-AR  
ALUK 3.2

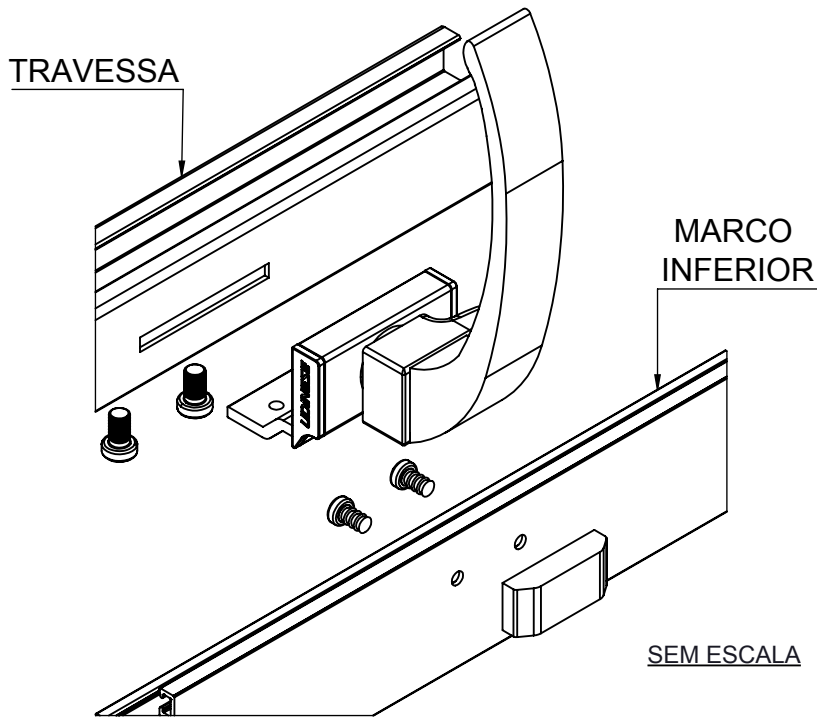


UDINESE

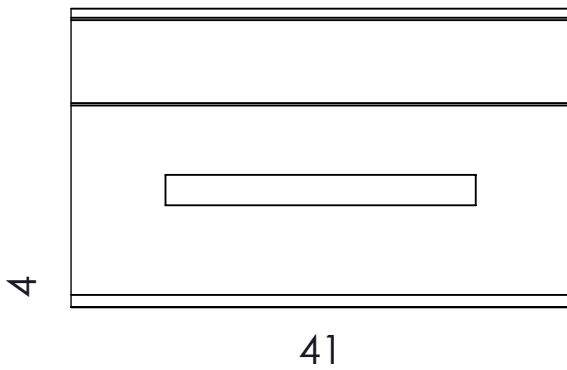
# FECHO MAX-AR 735D INF C/CTF B7 C/CALCO

## INSTRUÇÃO DE MONTAGEM E USINAGEM

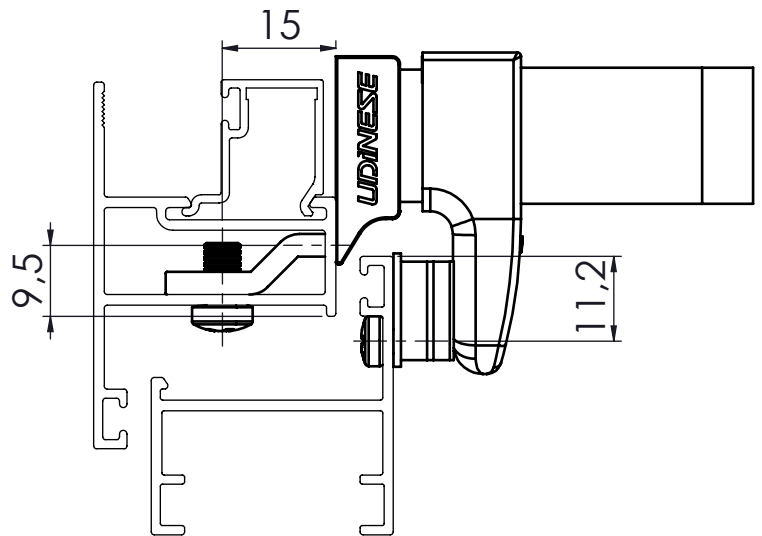
IMAGEM MERAMENTE ILUSTRATIVA



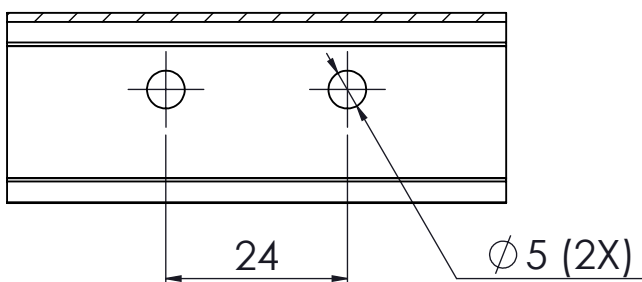
### USINAGEM DA TRAVESSA



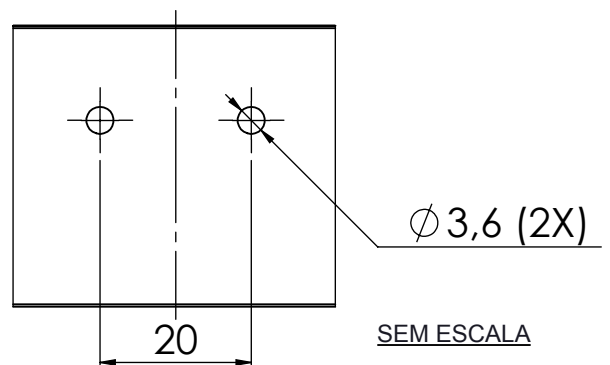
### REFERÊNCIA DE USINAGEM



### SEÇÃO A-A



### USINAGEM DO MARCO INFERIOR



**UDINESE**