

# TAMPA MONTANTE ABSOLUTA/640/740/382/1011 1PAR(NYL357A)



## CARACTERÍSTICAS

CODIFICAÇÃO		
COR	CÓDIGO	CATÁLOGO
BCO	9901369	NYL357ABCO
PRT	9901368	NYL357APRT

### OBSERVAÇÕES

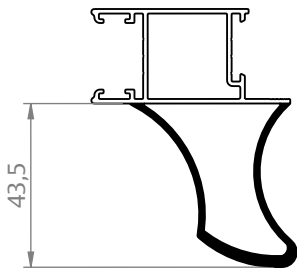
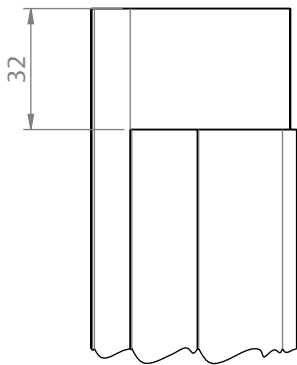
#### COMPOSIÇÃO/CARACTERÍSTICAS:

- TAMPA: POLÍMERO.

#### PERFIS DE APLICAÇÃO:

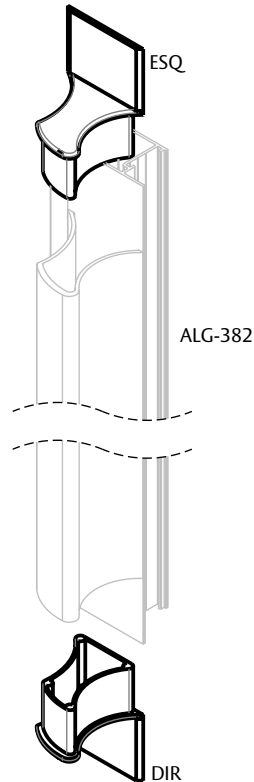
- ALG-382, CX-608 (ALG-740), CX-609 (ALG-640), ALG-40301 (ALG-1012) E ALG-40401 (ALG-1011).

## USINAGEM



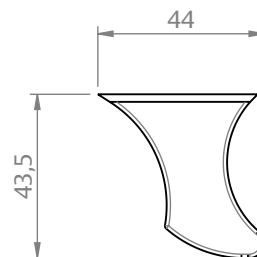
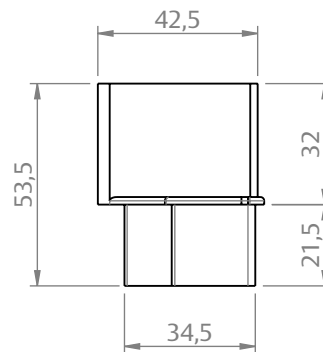
ESCALA 1 : 2

## APLICAÇÃO



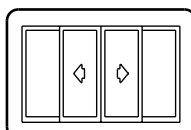
ESCALA 1 : 3

## DIMENSÕES



ESCALA 1 : 2

PORTA E JANELA  
DE CORRER  
ABSOLUTA



**UDINESE**  
**ASSA ABLOY**