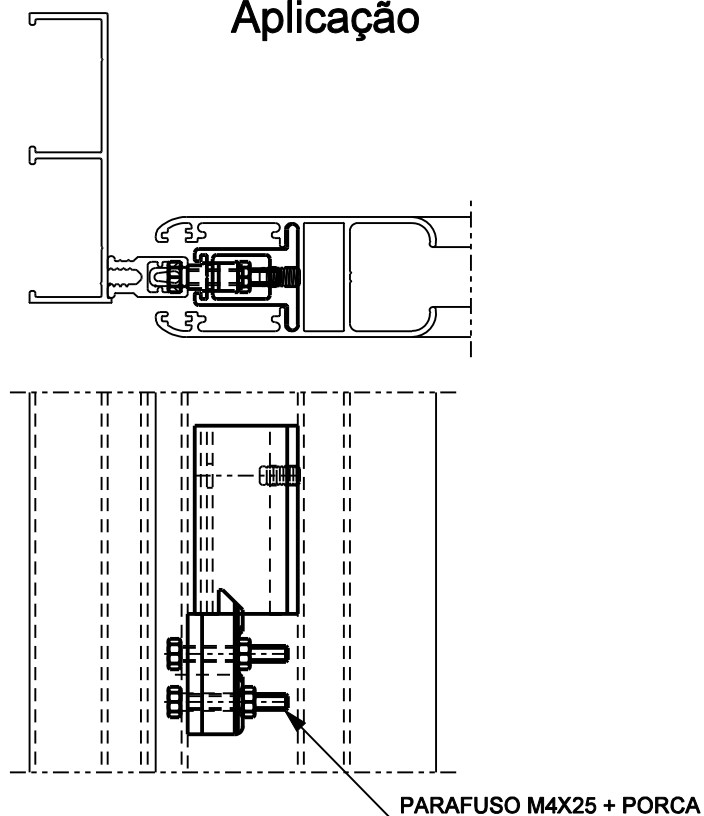


TRAVA FOLHA FIXA ELEGANCE 300



Aplicação



escala 1:2

Características

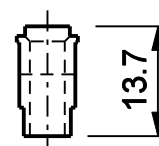
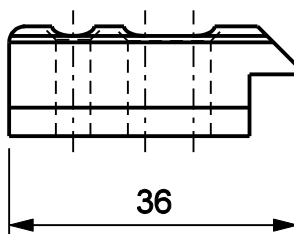
Componentes	Matéria-prima
Contra-fecho	Zamak
Batedeira	Alumínio
Parafuso e Porca	Inox

Componentes de fixação	Dimensões	Qtde.
Parafuso	M5X7 s.c/al/inox	1/pç
Parafuso	M4X25 sext./inox	2/pç

Embalagem	10 contra-fechos
	10 batedeiras
	10 Parafusos M5X7
	20 Parafusos M4X25
	20 Porcas

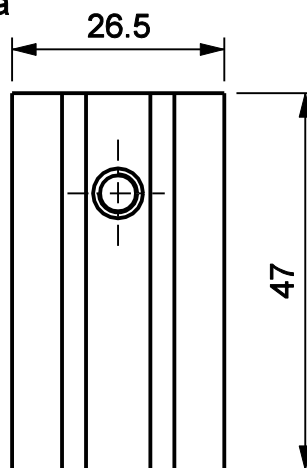
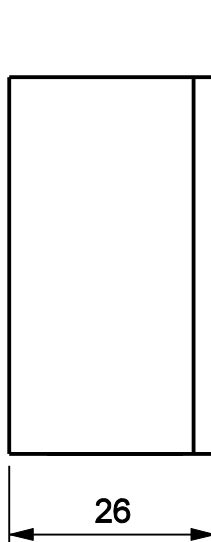
Codificação		
Cor	Udinese	Catálogo
PRT	9208468	TRAE LG300E10PCS

Contra-fecho



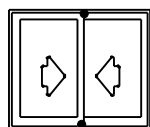
escala 1:1

Batedeira



escala 1:1

*Todas as medidas em mm



JANELA E PORTA DE CORRER

ELEGANCE

UDINESE